

CERTIFIED LAND CORNER RECORDATION

DESCRIPTION OF CORNER EVIDENCE FOUND, AND ORIGINAL RECORD (if known)

Marked stone 1/4 corner section 18,
T. 13 N., R. 68 W., 6th P. M.
LARAMIE COUNTY, WYOMING

DESCRIPTION OF MONUMENT AND ACCESSORIES ESTABLISHED
TO PERPETUATE THE ORIGINAL LOCATION OF THIS CORNER:

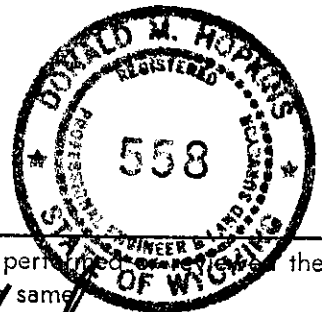
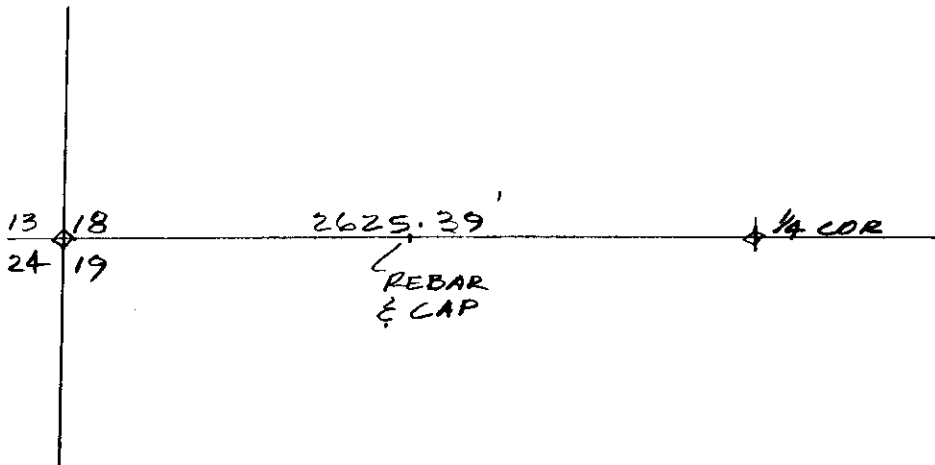
MARKED STONE 1/4 WITH + ON TOP
DISTANCE TO SW CORNER SECTION 18
IS 2625.39 FEET
SET POINT 1312.70 FEET WEST

1987 JUN 9 PM 2:17

LARAMIE COUNTY
CHEYENNE, WY.

029754

SKETCH, WITH COURSE AND DISTANCE TO ADJACENT CORNER IF DETERMINED IN THIS SURVEY.
(May Sketch or Paste Reproduction on Reverse Side.)



I, Donald M. Hopkins certify that I have carefully performed the work done on the diagrammed corner as reported on this recordation form and approve the same.

Donald M. Hopkins
Signature of Surveyor

558
Registration No.

STATE OF WYOMING,
Office of Clerk and Recorder,
County of Laramie

This "corner record" was filed for record on the 9th day of June, 1987, was noted on the cross-index plat and is assigned page No. _____, in book No. _____.

James C. Whitehead
County Official

Cross Index No. <u>N-3</u>	T. <u>13</u>	R. <u>68</u>	Mer.
_____	T. _____	R. _____	Mer.
_____	T. _____	R. _____	Mer.
_____	T. _____	R. _____	Mer.
_____	T. _____	R. _____	Mer.
_____	T. _____	R. _____	Mer.
_____	T. _____	R. _____	Mer.

BOOK 1247

675